

ABOUT

BGS promises in delivering the highest quality residential, commercial, and industrial glazing.

We manufacture, supply, and install to specification - quality windows, doors, shop fronts, louvers, and frameless glass. Large selection of hardware and fixtures also available to meet expectations and or specifications.

All our products are designed and glazed in accordance with relevant Australian standards and specifications. Our company and installers all hold appropriate qualifications, licenses, insurances and or training (task specific) to carry out all new and old construction projects.

SERVICES

BGS Aluminium uses only the best quality products, systems, and quality control measures to achieve good workmanship results in accordance with, The Building Code of Australia and Australian Standards.

Together with our industry partners, we can supply and install a diverse range of architectural & structural systems meeting all our customers and client's needs, wants and job specific requirements. Our wide product range gives you the ease of customising your project to suit your needs, whether it is a residential or a commercial project. We also offer a wide range of colour selection and highlights.

We offer 3 stages – choose 1 or all

1. **Design:** at this stage we can offer to consult, measure, scope and design tailored solutions for all small to large projects. As with everything in design, deep consultation is a must to ensure the customer is happy with the end project, and we pride ourselves on our ability to listen and respond to the needs of each individual customer.

- Unique look to meet your brands needs
- Have a design and want it replicated? – talk to us today!
- Professional service – let us come to you

2. **Manufacture:** To help ensure the highest standards of quality, BGS has the capability to manufacture a wide range of high-quality glass and aluminium products.

- Quality control measures in place to guarantee expectations
- Sourcing of quality materials achieving high end results
- Fast turnaround – have your project finished sooner
- On-time delivery
- Robust manufacturing process

3. **Installation:** Once design and manufacturing have been completed it is time for the highly efficient installation process that BGS offers.

- Quality workmanship with a timely matter approach
- High end and fast results
- Fully licensed and insured team
- Inspection and test plans submitted upon completion
- Experts in subcontracting with a long history of working closely with other constructions business to complete larger projects

COMMERCIAL DOORS



Sliding Doors

Our sliding and stacking doors provide a greater use of floor space due to the unobtrusive sliding panel. A wide opening can be achieved with sliding doors. They can be left open in strong breezes without the fear of slamming.



Hinged Doors

Our hinged doors are custom high tensile extruded aluminium hinge nests into the frame and the door stile recess. The hinge is screwed to frame through reinforced walls.



Entry Doors

We offers a choice of single and double opening entry doors; overhead panels; sidelights incorporating glazed panels of clear, colored, textured or custom glass.



Bi-fold Doors

Stylish and practical bi-fold doors are a new solution when seeking free flowing access from indoors to your outdoor recreational areas. Choose your preferred style – fully floating or a combination of floating, folding or hinged entry.



Stacking Doors

Stacking doors have an internal sliding panel that offers great security. They also feature a self-draining sill and seal to prevent water penetration and comply with the requirements (Australian Standard for window and door performance).

Windows



Awning

Hinged at the top, Awning Windows are designed to provide convenient operation and controlled ventilation. These out-swinging windows scoop in air which would otherwise miss the opening, providing you with year round comfort.



Casement

Hinged at the side to swing outwards, casement windows can be angled to bring gentle breezes into your home.



Double hung

The double hung window consists of an upper and lower sash that slide vertically in separate grooves in the side jambs or in full-width metal weather stripping. This type of window provides a maximum face opening for ventilation of one-half the total window area.



Sliding Windows

One of the most popular windows for houses and home units is the traditional sliding window, we offer a variety of locking options. The flyscreens fit snugly into the frame hard up to the outside with no unsightly recesses.



Bi-fold windows

The Bi-Fold window is an elegant, contemporary solution for creating a large clear opening that brings fresh air and the outdoors into a space. Ideal for making a dramatic connection with verandas, gardens and more or expanding a room into adjoining interior areas

Sky Lights



Skylights are not only functional day-lighting products, but an architectural design feature with a number of benefits. The installation of a skylight adds fresh air, light and sky views, transforming the quality of both home and working environments.

Skylights provide the most effective route to natural daylight. They can also be a source of ventilation or even access to a roof terrace. In order to gain maximum comfort and levels of energy efficiency, the ingress of daylight must be controlled in accordance with the season's climatic conditions. This will achieve the optimum balance of light and heat transfer.

COMMERCIAL SHOP FRONTS



As a premier supplier of shop fronts, we have supplied and installed shop fronts for many leading retailers. Frameless Shop Front Doors are a popular choice for offices and retailers alike.

The most stylish looking type of all the shop fronts is the full glass. The overall finish is clean with full height glazing, a frameless full height glass door, stainless steel glass fittings and modified hardware.

This door type is the preferred choice where the image of the building is important.

COMMERCIAL GLASS



Laminated Glass

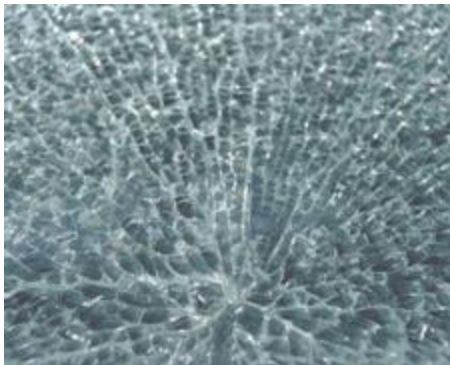
Laminated safety glass is a durable, versatile product that offers a broad range of benefits including:

- Safety
- Security
- Heat and glare control
- UV elimination

– Sound reduction

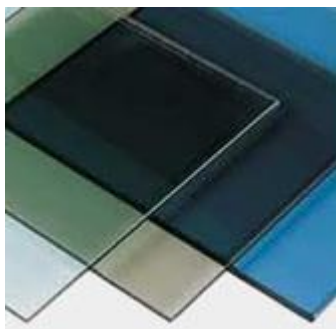
The major advantage of laminated glass is that if the glass is impacted with sufficient force to cause breakage, the fragments of the broken glass typically remain intact reducing the likelihood of injury.

Laminated safety glass is available in a wide range of tones and thermal performance to suit almost any glazing application.



Toughened Glass

Toughened glass is produced by applying a special treatment to ordinary float glass after it has been cut to size and finished. The treatment involves heating the glass so that it begins to soften and then rapidly cooling it. This produces a glass which, if broken, breaks into small pieces without sharp edges.



Energy Glass

With energy glass some manufacturers produce float glass with a special thin coating on one side which allows the sun's energy to pass through in one direction while reducing the thermal transfer the other way. The principle behind this is the difference in thermal wavelength of energy transmitted from the sun and that transmitted from the heat within a room.



Slump Glass

Made from flat glass, this type of slump glass has a design rolled onto one side during manufacture. It can be used for decorative effect and/or to provide privacy. Patterned glass is available in a range of coloured tints as well as plain. On external glazing, the patterned side is usually on the inside so that atmospheric dirt can easily be removed from the relatively flat external face.

Compliance & Accreditation

- **What is AS 2047?**

AS 2047 is the mandatory minimum specification for windows and doors used in Australia it includes compliance to the Glass Standard AS 1288.

The following tests are undertaken to verify product performance claims.

- AS 4420.2 Deflection Test - positive and negative pressures are applied to the window to test the maximum deflection under wind load.
- AS 4420.3 Operating Force Test - to verify that an opening sash is capable of opening and closing without undue effort.
- AS 4420.4 Air Infiltration Test - the air leakage of a window is tested to ensure energy and acoustic efficiency.
- AS 4420.5 Water Penetration Resistance Test - this tests to ensure that there are no water leaks through the window into the building at the required pressure.
- AS 4420.6 Ultimate Strength Test - negative and positive pressures are applied to the window to ensure it does not fail at the required wind pressure.

- **Which glazed windows and doors need to be tested to AS 2047?**

All windows and glazed doors located in the external wall of a building are required to be tested to AS 2047.

Exceptions to this rule are:

- Windows in other than the vertical plane
- Windows containing fixed louvres
- Windows constructed on site
- Architectural one off windows
- Second hand, re-used, recycled and replacement windows
- Heritage windows
- Glazed doors without a frame

- **Do adjustable louvres with metal blades, or ones with the top half glass and the bottom half metal, need to comply with AS 2047?**

Yes. All louvres on the exterior of a building must comply with AS 2047, notwithstanding the material(s) they are made from.

- **How can a toilet window with permanent ventilation meet the waterproofing requirement?**

A window with permanent ventilation cannot pass the AS 2047 tests and is not an AS 2047 window. This may be overcome by the use of a proprietary hooded permanent vent.

- **A window has no compliance labelling to either AS 2047 or AS 1288 and it should, what should I do?**

Don't use it. Send it back.

- **How does a manufacturer certify an exemption?**

For windows exempt from AS 2047, including heritage windows, AS 1288 would still apply and be certified.

- **Can an architect and/or owner specify design requirements that do not meet AS 2047?**

Generally, no, unless the requirements stipulated are more stringent than the standard specifies.

- **There seems to be general confusion regarding the responsibilities for nominating wind ratings for sites. Who is actually responsible?**

Both AS 2047 - Appendix C and the BCA advise:

- For housing the purchaser nominates the window ratings, the window exposure and whether the window is a corner window when ordering the window assemblies.
- For other residential buildings and commercial buildings the purchaser nominates the design wind pressure for the window assemblies when ordering the windows.
- The manufacturer of standard window assemblies should verify the window rating or design wind rating.